



PT. **GLOBAL** SOLAR FILM

THE MOST TRUSTED WINDOW FILM AND SOLAR PANELS SUPPLIER
IN SOUTHEAST ASIA

WWW.GLOBALSOLARFILM.COM

PROFESSIONAL SUPPLIER OF WINDOW FILM / SOLAR INSTALLATION AND ECOLOGICAL ENERGY TECHNOLOGY SOLUTIONS

We are proud to be one of the leading suppliers of solar energy systems on the planet, supplying window films and solar panels. We provide green, sustainable and affordable energy to the world.

PT Global Solar Film follows the highest industry standards to provide customized solutions to its customers. Every member of our team is the best in the automotive and commercial solar industry. We have dedicated engineering and design departments, an energy analysis department, shading research and an electrical blueprint department to ensure that we provide the most appropriate solutions.



LATEST INNOVATIVE
TECHNOLOGY



FUEL & ENERGY
SAVING



HIGH CLASS SECURITY
PROTECTION



UTILITY SCALE SOLAR
POWER



ADVANCED ENERGY
STORAGE

PT. GLOBAL SOLAR FILM

GREEN SEDAYU bizpark daan mogot.

DM9/058 Jalan daan mogot 9.

Tel : +62 21 54335880

Email : sales@globalsolarfilm.com

“

WHEREVER YOU ARE,
WHATEVER YOU NEED,
WE CAN DELIVER!



ABOUT US

OUR STORY

“

Delivering Unmatched Quality of Service ”

We are a Locally Owned and Regionally recognized window film and solar panels solutions company. We work hard every day to earn your respect and provide the best solutions with window films and solar panels by overcoming the challenges and problems that you face.

At Pt Global Solar Film, we consider the promotion of alternative sources of energy via solar solutions to be our duty, with a view to encouraging citizens in our country to “go green”. Therefore, we research all possible ways and means to establish alternative sources of energy in order to reduce our carbon footprint.

Pt Global Solar Film began operations in 2018 providing window tinting for homes and automobiles, and, later, commercial buildings. Since then, we have been continuously changing, evolving and adapting to new environments and markets as rapid advances in film technology have allowed us to expand both our products and our services.

Today we offer more and more innovations in specialist films for solar, safety, security and decorative purposes, as well as signage and architecture. We also offer a wide range of solar panel systems to provide the best solar solutions to our valued customers.

This breadth of technical experience which we have gained from working on all manner of residential developments, banks, hospitals, schools, shopping malls, transportation and airports, gives us a unique advantage. It provides us with the expertise and ability to provide every client with the best possible film coating solutions and services.

At Pt Global Solar Film, we are continuously improving our service and bringing even more quality to our customers.

OUR MISSION AND VALUES HAVE NEVER WAVERED

Our approach to our customers remains the same :-

- We provide only the highest value products.
- We possess unsurpassed knowledge.
- We perform precision installations.
- We deliver exceptional customer service.



COMMERCIAL WINDOW FILM


Our solar films yield significant returns, helping to cut energy expenses while also increasing passenger comfort and productivity. Temperatures, screen glare and exterior appearance are all enhanced with professional solar film installation.


Security films combine solar benefits with added protection from break-ins, serious weather and terrorism. With a wide range of styles, they can enhance the look of any property. Our security selection also includes an anti-graffiti film formulated for scratch-resistance and residue-free removal, to thwart vandals attempting to damage a building's exterior.




AUTOMOTIVE WINDOW FILM

Automotive window film not only makes your car stand out in a crowd, it also helps to keep the car's interior cool, cuts distracting glare and blocks dangerous UV rays. There is an automotive film to fit every vehicle, whatever your requirements.

- **KEEPING THE INTERIOR COOL**

The sun's heat can cause vehicle interiors to become unbearably hot. Automotive window film can help. Window film can significantly reduce the heat coming through your windows and modern technology allows you to achieve this performance even with very light films.
- **BLOCKING DANGEROUS UV RAYS**

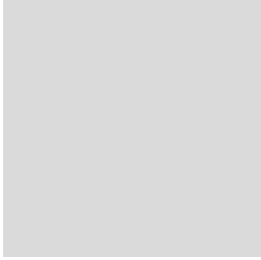
While most of us would not think about spending a significant amount of time in the sun without sunscreen, we expose our skin to dangerous UV rays in our cars each day. While it is rare to get sunburned through your car windows, harmful ultraviolet (UVA) rays that contribute to premature aging and skin cancer can still reach you. Most automotive window films prevent 99%+ of harmful UV rays from passing through the glass.
- **CUTTING DISTRACTING GLARE**

At certain times of the day or year, glare can be distracting and even dangerous. Automotive window film enables you to cut the glare, giving you a better view of the road.



RESIDENTIAL WINDOW FILM

PT Global Solar Film offers a full array of innovative solar, security and specialty film solutions for a better life at home. Our solar films are a modern, view-preserving alternative to window treatments. They improve the performance of glass by tempering the effects of the sun by blocking UV rays, reflecting away heat and creating a better environment for electronic screen use.



GLOBAL SOLAR FILM

We are one of the largest window film suppliers in Southeast Asia, including Malaysia, Singapore, Indonesia, Thailand, Vietnam, Cambodia and the Philippines.

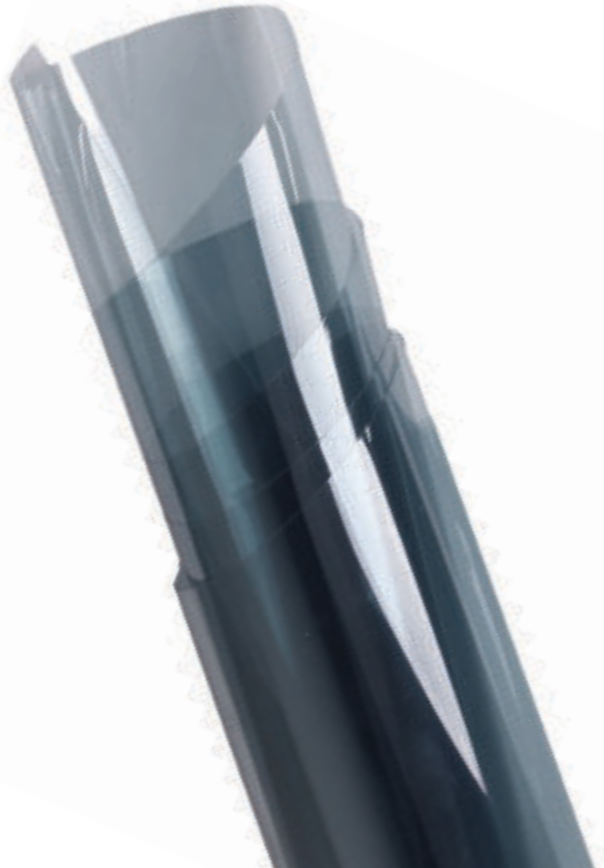
As one of the leading solar film suppliers we supply all types of window tinting film, such as:

Ceramic Window Films

Ceramic films are non-corrosive and will not interfere with electrical signals. It is neither dyed nor metallized. It offers crisp, clear views, both day and night. Due to nano-ceramic particles being virtually invisible, ceramic tint is an excellent choice for clients who want to maintain the original appearance of their windows. It is created using the latest nano-ceramic technology incorporating microscopic metal oxide particles.

Sputtering Window Films

Our sputter films have a high visible light transmission of up to 73%, yet dramatically reduce infrared energy and over 99% of ultraviolet radiation. Sputter films are ideally suited to automobiles in situations where conventional window films may be prohibited. These films combine a maximum two-way visibility with excellent protection from sun damage.



UV400 Window Films

This highly graded window film provides 100% UV radiation protection, blue light protection and high solar heat reflection. 100% is a bold claim and we confidently claim it. Our UV400 window film series is produced using a newly invented technology. Its manufacturing process is unique, resulting in superior product benefits compared to other window films.

Safety and Security Window Films

Glass does not provide a lot of privacy. Many automotive, residential and commercial window films consist of various color shades to provide added privacy to your home while still allowing clarity and sunlight to enter. Did you know that security window films have the ability to stretch before they begin to tear? This one-of-a-kind sturdy film can withstand and absorb significant amounts of shock and pressure; hence it will take a great deal of effort for burglars to break in. Safety and security film will reduce the damage and danger of glass shards flying throughout car interiors, home or office spaces. This film also provides protection from harmful UV rays, while allowing sunlight to shine through.

Chip Dyed Window Films

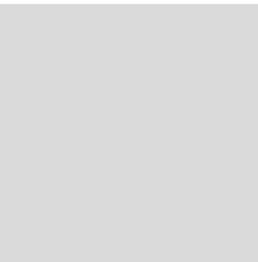
Chip dyed type window films are prepared through an extrusion process, where the color chips are melted and placed on the film. This process assists in giving the color of the film a lasting life and prevents them from discoloring. Chip dyed films offer a brilliant appearance as they are manufactured through a unique coating method. The films are produced by using colored PET chips, which are embedded in the film instead of color coating it on outside of the transparent films.

Chip dyed PET film has an outstanding light transmittance which can efficiently obstruct harsh glare both in the daytime and at night.

- Silver Reflective Window Films
- Pigment Window Films
- Dyed Window Films
- Frosted and Decorative Films
- Colour Stickers



IT'S SIMPLE
WE CANNOT CONTINUE TO BURN THINGS TO
MEET OUR ENERGY NEEDS !

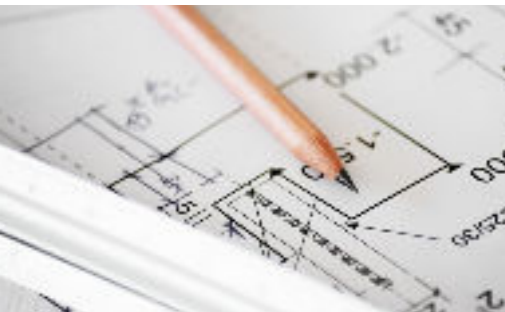


COMPANY INTRODUCTION



Solar Photovoltaic (PV) System Service Provider

- Retrofit installation on EXISTING residential, commercial or industrial facility rooftops
- Design and installation of PV systems for new buildings
- Design and installation of large scale ground-mounted PV system (Solar Farms)
- Options of grid-connected, off-grid or off-grid hybrid system



Engineering Analysis Capabilities

- Mechanical stress / strain analysis - To ensure part reliability and factor of safety (FoS)
- Thermal analysis - To ensure part endurance in extreme temperatures
- Fluid dynamics analysis - To understand the impact of fluid flow dynamics on structures / objects



Design Capabilities

- Custom design
- Short lead time
- 3D modelling
- Software parts interface matching
- Exploration of new material

WHY SOLAR ENERGY?

The question occurred to us: “Why solar energy?”

The sun and sand are two inexhaustible raw materials, readily found everywhere. These are the two main components used to generate solar energy. As these materials are very easy to obtain, there is no surprise that energy from rooftops (solar panels) will soon be cheaper than the conventional electricity that we are using. Indeed, solar energy is the key to future economic growth. The development of solar power can be compared to other modern marvels of the past such as the steam engine, the car and the computer.

This is why you should choose solar power:

- The main power source of the world, the Sun, will continue to shine for another 4 billion years and continue to supply limitless free energy as it does so.
- The amount of solar energy that reaches the earth is 10,000 to 15,000 times more than our current daily needs!
- Generating solar energy does not produce CO₂, making it environmentally friendly.
- A solar power system gives you freedom, allows you to be self-sufficient and saves you from increasing energy costs.
- Solar energy is the only source of energy that can be produced locally worldwide.
- Energy waste is minimized and costs are reduced by solar energy as long transportation distances are no longer required.
- The sun cannot be monopolized. It is independent and available to everyone.
- Solar power is harmless, clean, green, renewable energy.



I

OUR FUTURE

A STRATEGY TO ADVANCE SOLAR PV WORLDWIDE

We focus on solutions that increase the economic returns of solar energy while reducing its ecological cost.

SERVICES

At PT. GLOBAL SOLAR FILM, we offer world class energy solutions for Solar Residential and Commercial Power Systems | Solar Farming | Solar Power Backup Systems | Solar Business.

We have completed many roof-top solar installations to date.

Residential systems can be divided into off-grid and on-grid systems.

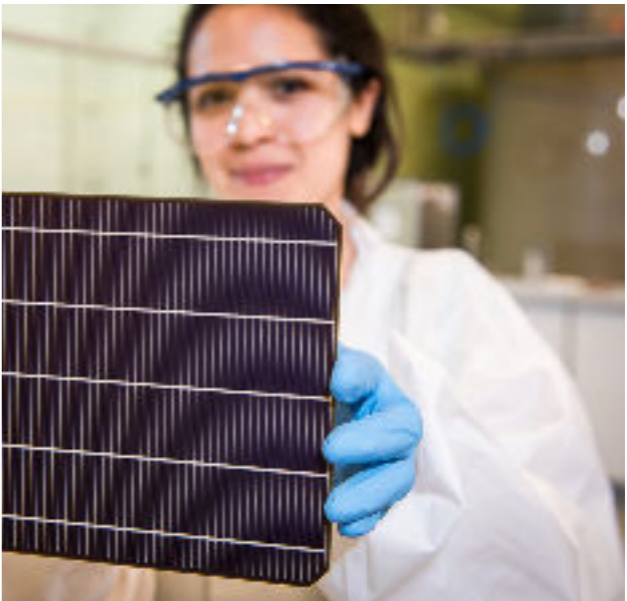
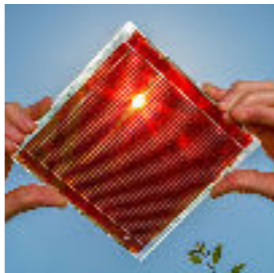
Off-grid: Households generally consume the most energy during the early evenings and mornings – the time of day when the sun does not produce optimal energy. Storage of energy through the use of batteries then becomes necessary. These systems provide the consumer with the security of constant supply, but do not necessarily result in a very cost-effective solution. In this instance comfort takes priority.

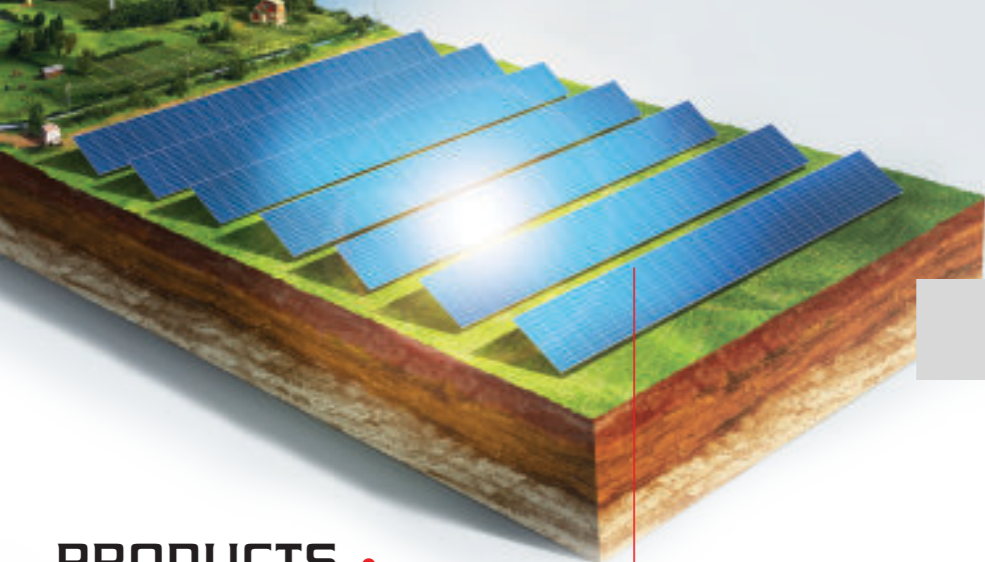
On-grid: Households could opt for an on-grid system where the power is generated during the daytime and fed directly into the household's energy needs to offset energy drawn from the grid. Should the household be unable to use all the power generated at a given time, called "over-generation", the power would then be fed into the grid, an aspect that is not yet fully operational on the South African grid.

Commerce is about making money. Your office or shopping mall could generate its own power at less than the costs of the grid. Minimize your risk through the security of supply and a reduction of costs. Already, in the current market, a commercial system seldom fails to make financial sense.

The rooftops of commercial buildings such as shopping malls and office blocks receive enormous amounts of solar energy which, if not used, unfortunately goes to waste. Commercial buildings generally use more power than that which could be generated by covering its roof with PV Solar panels. Almost 90% of all buildings could save electricity costs by installing photovoltaic solar panels on their rooftops.

Industry is reliant on electrical supply. Whilst industry consumes large amounts of power, the generation through PV during daytime could be offset against the total consumption to reduce costs. Industrial sites have vast unused roof space and are at the same time large consumers of electricity. Installing a Solar PV system would offset the cost of power purchased from the grid.





RELIABLE AND SMART SOLAR
A variety of modules and solutions to fit your solar project needs

Vertex 550W TSM-DE19
MBB, 535-555W

PRODUCTS



110 CELL
Monocrystalline



535-555W
Power Output Range



21.2%
Maximum Efficiency



0/+5W
Positive Power Tolerance



Vertex 550W TSM-DEG19C.20
Bifacial, MBB, 530-550W



110 CELL
Monocrystalline



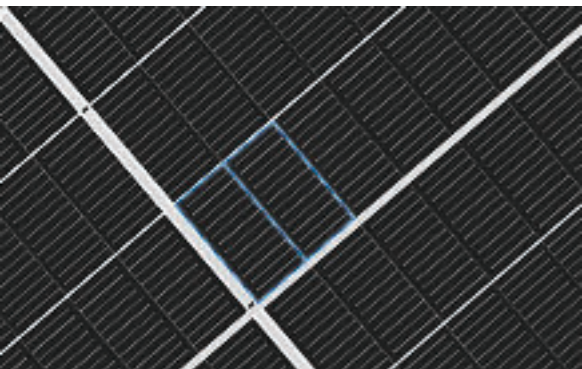
530 - 550W
Power Output Range



21.0%
Maximum Efficiency

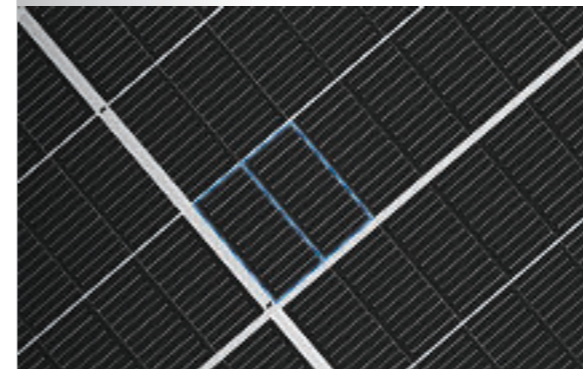


0/+5W
Positive Power Tolerance



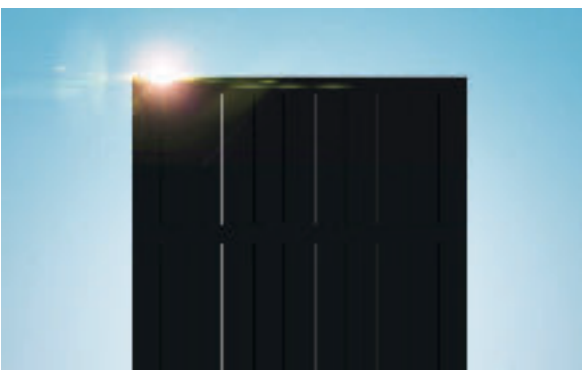
550W Ultra-high Power with 21.2% High Efficiency

Based on the 210mm large-size silicon wafer and monocrystalline PERC cell, the Vertex module comes with several innovative design features allowing a high-power output of more than 550W. An excellent temperature coefficient and low irradiation performance results in higher power. Furthermore, Vertex benefits from square mono cells and high-density interconnective technology, raising module efficiency up to 21.2%.



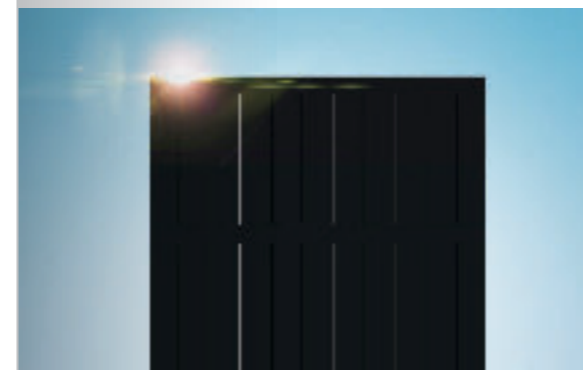
550W Ultra-high Power with 21.0% High Efficiency

Based on the 210mm large-size silicon wafer and monocrystalline PERC cell, the Vertex module comes with several innovative design features allowing a high power output of more than 550W. This module absorbs solar radiation from both sides, 5%-30% of additional power generation generated by the rear side. An excellent temperature coefficient and low irradiation performance results in higher power. Furthermore, Vertex benefits from square mono cells and high-density interconnection technology, raising module efficiency up to 21.0%.



Integration of Innovative Technologies: High-density Interconnection and MBB

On the basis of its superior multi-busbar technology, Trina Solar's research and development team has introduced an innovative design that integrates non-destructive cell cutting and high-density interconnection technologies. The multi-busbar technology, with the capability of increasing light absorption, is a perfect match with the large-area cell. Technology integration enables the Vertex to achieve higher power and power generation capacity per watt.



Integration of Innovative Technologies: High-density Interconnection and MBB

On the basis of its superior multi-busbar technology, Trina Solar's research and development team has introduced an innovative design that integrates non-destructive cell cutting and high-density interconnection technologies. The multi-busbar technology, with the capability of increasing light absorption, is a perfect match with the large-area cell. Technology integration enables the Vertex to achieve higher power and power generation capacity per watt.



High Reliability

With stronger resistance against hotspots and excess temperature, Vertex modules maintain high reliability. The application of multi-busbar cells results in more uniform loads to prevent stress, resulting in better performance. Nowadays the market share of PV modules featuring MBB technology is dominant in the global solar industry.



Smart Solar Solution: Bifacial Modules with Tracking

The Vertex module is verified and confirmed to be compatible with mainstream inverters and tracking systems. The TrinaPro solution integrates Vertex modules with customized TrinaTracker systems, which can give full play to the Vertex module and ensure the safety and reliability of the system. As for the special cell structure of 210mm Vertex, the TrinaPro R&D team has developed the adaptive Super-Track tracking algorithm, which can result in an extra performance gain of 3-8%.



THE NEXT GENERATION OF ULTRA-HIGH-POWER MODULES



TALLMAX M TSM-DE17M(II)
Half-cut, MBB, 430-450W



144 CELL
Monocrystalline



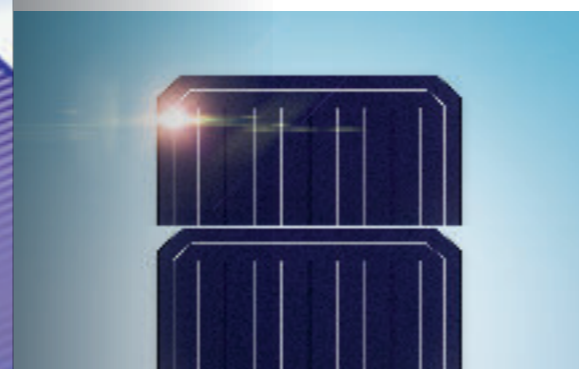
430-450W
Power Output Range



20.6%
Maximum Efficiency



0/+5W
Positive Power Tolerance



Increased Energy Output with Half-Cut Cells and Multi-Busbar Technology

The Tallmax M module adopts multi-busbar technology, which can shorten the current conduction distance by more than 50% and thus decline in the internal ribbon resistance by up to 15%. The design of finer and narrower busbars effectively reduces the shading area and thus increases the effective light receiving surface. MBB technology can decrease the chance of power loss, thus increasing energy efficiency. Trina Solar was the first manufacturer to implement the mass production of MBB in November 2017.



High Reliability

The Tallmax M module is one of the industry's most trusted modules. With stronger resistance against hotspots and excess temperature, half-cut cells can improve module reliability. The application of multi-busbar cells results in more uniform loads to prevent stress, resulting in better performance. Nowadays the market share of PV modules featuring MBB technology is dominant in the global solar industry.



Higher Return on Investment Thanks to Higher Power Output

This Tallmax M module integrates various technologies like half-cut cells and multi-busbar, with the highest power up to 450W. Application of this Tallmax M module can remarkably reduce the number of modules employed in a power station, thus lowering the corresponding cost of supports, cables, construction and land thus improving the return on investment.

WHAT ARE THE BENEFITS

Of A Power Purchase Agreement?

“

Benefits of Power Outright Purchase & Purchase Agreement / Zero Capex

OWN

ZERO
CAPEX

Outright Purchase

- 1. Enjoy Tax Incentive from MIDA up to 48% (Msia)
- 2. Return of Investment Less than 7-8 Years
- 3. Electricity Savings up to 15-30%
- 4. Long Lifespan and Warranties
- 5. Lower the Carbon Footprint
- 6. Be Reimbursed of excess power
- 7. Increase Corporate Image and Property value
- 8. Protection from Rising Electricity Cost

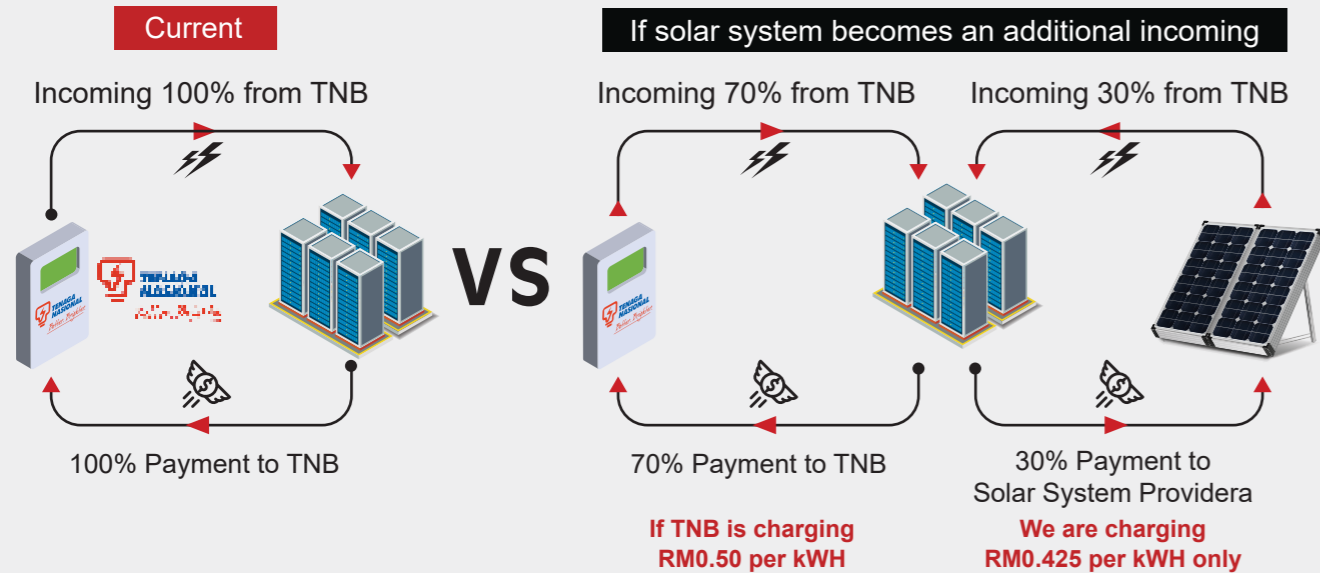
Private Power Purchase Agreement / Zero Capex

- 1. Zero Upfront
- 2. Lower Electricity Rate per KWH
- 3. Electricity Savings up to 15-25%
- 4. Long Lifespan and Warranties
- 5. Lower the Carbon Footprint
- 6. No Maintenance
- 7. Increase Corporate Image and Property value
- 8. Protection from Rising Electricity Cost
- 9. Own the System after Contract Tenure

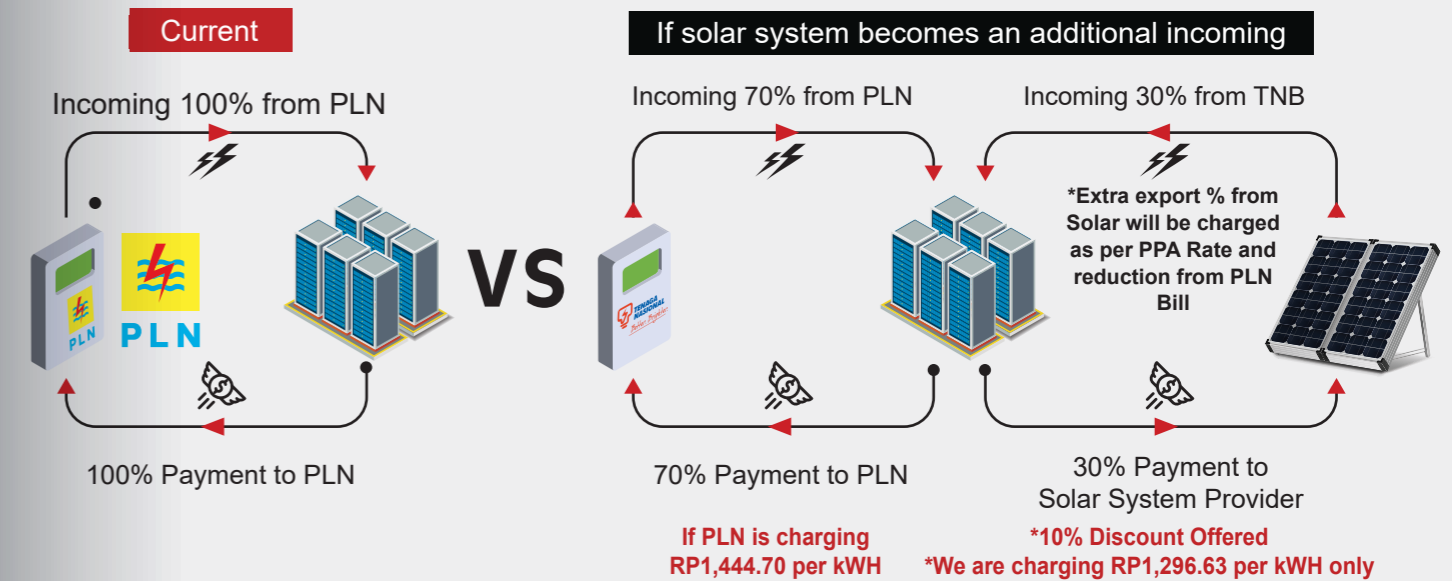
DIFFERENCES BETWEEN SINGLE INCOMING VS MULTIPLE INCOMING



MALAYSIA



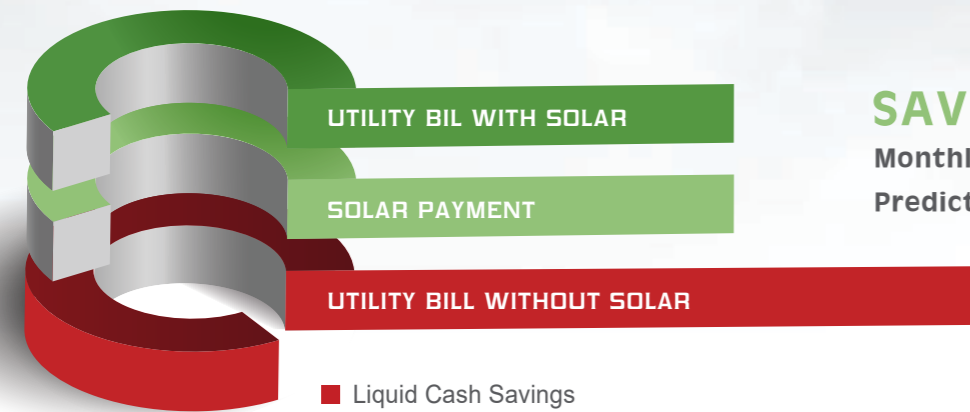
INDONESIA OR OTHER COUNTRY'S UTILITIES



LIQUIDITY INFORMATION

- Savings produce by Solar can only increase over time, as utility Cost increases.
- Historically, Utility Cost have never decreased.
- Solar system are insured for 25 years and proven to last up to 50 years.

|| YEAR 1 YEAR 10 YEAR 20 →



SAVINGS
Monthly Cash Savings
Predictable and Zero Volatility

- Liquid Cash Savings
- Solar Systems are Assets that can be transfer to the New Site Owners. (Similar to Mortgage)



11,090
Tree seedlings
grown for 10
years



81,582,611
Number of
smartphones
charged



1,685,538
Miles driven by an
average passenger
vehicle



822
acres U.S.
forests in
one year



65,882
gallons of
diesel
consumed

CARBON SAVINGS INFORMATION (CORPORATE IMAGE)

SOLAR VS TREES

Carbon dioxide (CO²) occurs naturally in the earth's atmosphere as a colourless, odourless gas. The main uses of carbon dioxide are as a coolant , a fire extinguishing gas, bubbles in fizzy drinks and (when solid) to produce smoke effects.

The main source of carbon dioxide into the atmosphere is from living organisms breathing it out. Similar quantities are absorbed by trees and plants. Other natural sources are forest fires and volcanoes. The burning of fossil fuels (coal, oil and natural gas) for industrial, domestic and transport purposes releases significant amounts of carbon dioxide.

On a local scale, increased levels of carbon dioxide are unlikely to cause adverse environmental impacts. Its main impact is on a global scale.

It is one of the main "greenhouse gases" contributing to global warming and is used as a reference against which to rate the "globak warming potential" of other greenhouse gases.

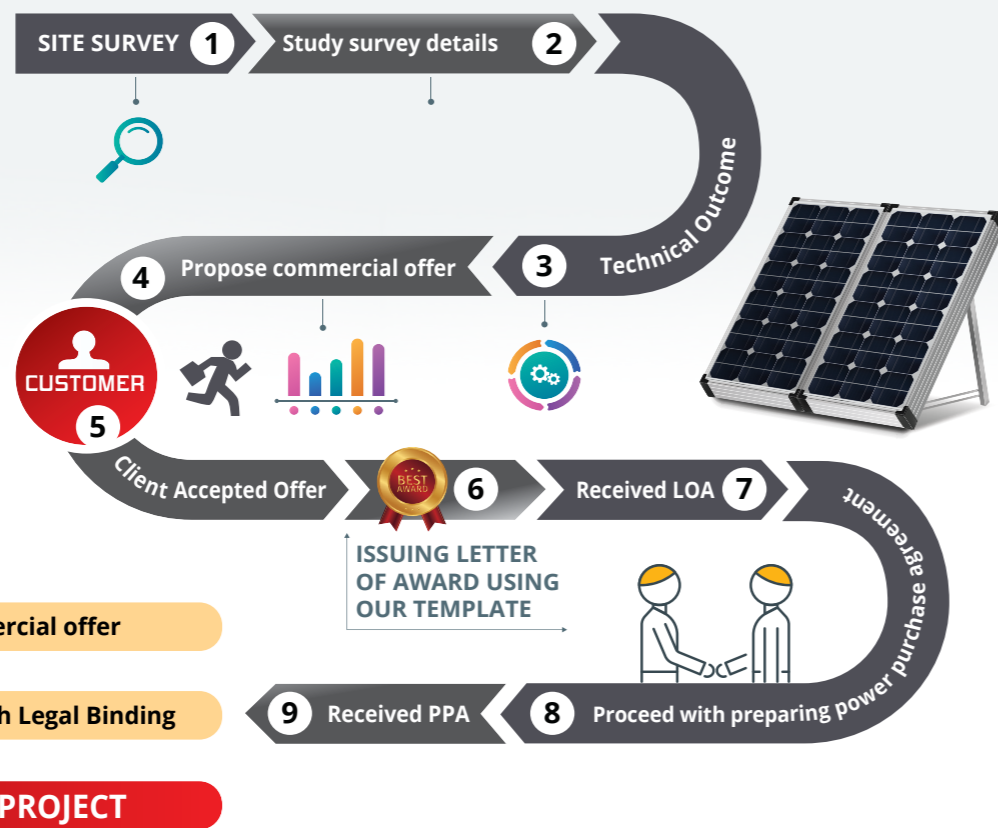
At normal environmental concentrations, carbon dioxide has no impacts on human health. At extremely high (artificial) concentrations in an enclosed space the reduction in oxygen levels could lead to suffocation.

The United Nations Framework Convention on Climate Change (Kyoto Protocol, 1997) introduced measures (such as taxes on fossil fuels) designed to achieve reduction of greenhouse gas releases (including carbon dioxide).

Amongst the other signatories from around the world, the Malaysian government is committed to the reduction of carbon dioxide emissions.



PROCEDURES OF POWER PURCHASE AGREEMENT / ZERO CAPEX



No.	Project Name	Project Type	Installed Capacity (kWp)	Year	R&R
1.	JISHAN PACK SDN BHD	FiT	180	2013	EPC & MAINTENANCE
2.	ROVSKI INDUSTRIES SDN BHD	FiT	180	2013	EPC & MAINTENANCE
3.	JEFI AQUATECH RESOURCES SDN BHD	FiT	180	2013	EPC & MAINTENANCE
4.	EAGLETECH INDUSTRIES SDN BHD	FiT	180	2013	EPC & MAINTENANCE
5.	JISHAN CAPITAL SDN BHD	FiT	180	2013	EPC & MAINTENANCE
6.	KUMPULAN MELAKA BERHAD	FiT	5,000	2013	SOLAR PV CONSULTING
7.	SSF SDN BHD	FiT	1,500	2013	INSTALLATION & COMMISSIONING
8.	SUN RISE PAPER SDN BHD	FiT	360	2013	INSTALLATION & COMMISSIONING
9.	PROTECT PRINT SDN BHD & DAYA QUARBAN GROUP	FiT	150	2013	EPC & MAINTENANCE
10.	THE STAR Newspaper	FiT	500	2013	INSTALLATION & COMMISSIONING
11.	SOLAR CORP SDN BHD	FiT	500	2013	INSTALLATION & COMMISSIONING
12.	PLANET SONATA SDN BDH	FiT	110	2014	EPC & MAINTENANCE
13.	BANDAR ECO SETIA	FiT	110	2012-2013	EPC & MAINTENANCE
14.	IJM BERHAD, THE LIGHT	SC	50	2012-2013	EPC & MAINTENANCE
15.	E&W VENTURETECH SDN BHD	FiT	1000	2015	CONSULTANT & MAINTENANCE
16.	MUNSANG PLANTATION SDN BHD	FiT	1000	2015	CONSULTANT & MAINTENANCE
17.	TENN PACIFIC SDN BHD (Subsidiary of SENG HENG ELECTRICAL (M) SDN BHD)	FiT	1,000	2015	CONSULTANT & MAINTENANCE
18.	SUNTECH ENERGY SDN BHD	FiT	1000	2015	CONSULTANT & MAINTENANCE
19.	SPA	SC	70	2015	EPC & MAINTENANCE
20.	QUBE SOLAR SYSTEM SDN BHD	FiT	425	2015-2016	EPC & MAINTENANCE

HIGHLIGHTS OF PROJECT COMPLETED MILESTONE

PROJECT REFERENCES (MALAYSIA)

No.	Project Name	Project Type	Installed Capacity (kWp)	Year	R&R
21.	SENG HENG ELECTRICAL (M) SDN BHD	FiT	500	2012-2017	EPC & MAINTENANCE
22.	SABAH SCHOOL & RESIDENTIAL PROJECT	FiT & SC	650	2015-2016	EPC & MAINTENANCE
23.	KTJ INTERNATIONAL SCHOOL	SC	70	2016	EPC & MAINTENANCE
24.	TUANKU JAAFAR GALLERY	FiT & SC	60	2016	EPC & MAINTENANCE
25.	GENERTECH CONSTRUCTION SDN BHD	FiT	425	2016	EPC & MAINTENANCE
26.	ANTAH HEALTHCARE	FiT	310	2016	EPC & MAINTENANCE
27.	TTL ENERGY SDN BHD (PAPAR,SABAH)	FiT	1,000	2017	INSTALLATION & COMMISSIONING
28.	KULIM JAPAN PLANT CAR PARK	SC	1,000	2017	INSTALLATION & COMMISSIONING
29.	UNIVERSITY OF NOTTINGHAM	FiT	62	2017	EPC & MAINTENANCE
30.	HAYAKAWA CO LTD (CHINA)	SC	300	2017	EPC & MAINTENANCE
31.	ONE SOLAR SYSTEM SDN BHD	FiT	425	2017	EPC & MAINTENANCE
32.	TIGA GAJAH CHO HENG SDN BHD	FiT	425	2017	EPC & MAINTENANCE
33.	LOTUS SPECTRUM SDN BHD	FiT	425	2017	EPC & MAINTENANCE
34.	ALIRAN TOKOH SDN BHD	FiT	425	2017	EPC & MAINTENANCE
35.	BP ENERGY SDN BHD	LSS	6,000	IP 2019	SOLAR PV CONSULTING & AC INTERCONNECTION
36.	JOHORE MANUFACTURING PLANT	SC	5,000	2018-2019	EPC & MAINTENANCE
37.	MCDONALD'S , SABAH	SC	60	2018-2019	EPC & MAINTENANCE
38.	MUTUAL LINK SDN BHD	NEM	20	2018	EPC & MAINTENANCE
39.	KOLEJ TUNKU JAAFAR, MANTIN	NEM	960	2019	EPC & MAINTENANCE
40.	EAGLE & PAGODA BRAND TECK AUN	NEM	165	2019	EPC & MAINTENANCE
41.	SIN GUAN HUP RICE MILL	NEM	400	2019	EPC & MAINTENANCE
42.	REHDA, SELANGOR	NEM	50	2019	EPC & MAINTENANCE
43.	MCDONALD'S KENINGAU, SABAH	SC	20	2019	EPC & MAINTENANCE
44.	PENANG PAPER MILLS	NEM	12000	2020-2021	ON GOING
45.	QL FIGO	NEM	2000	2020	EPC & MAINTENANCE
46.	BANSENG PLASTICS	NEM	800	2020-2021	ON GOING
47.	SJKC SIN MING	NEM	110	2020	EPC & MAINTENANCE
48.	THE FACE	NEM	140	2020-2021	ON GOING
49.	EITA ELEVATOR	NEM	300	2020-2021	ON GOING
50.	PARADIGM METAL	NEM	860	2020-2021	ON GOING
51.	THE FACE	SC	1000	2020-2021	ON GOING
52.	SME AEROSPACE	SC	1550	2020-2021	ON GOING
53.	AIROD SUBANG	SC	1550	2020-2021	ON GOING
54.	RICO FOOD & GUAN XENG	NEM	450	2020-2021	ON GOING



PROJECT REFERENCES (2021- FEB 2022)

Completed 7MW despite of the Malaysia's
Covid Strict Regulations & Multiple Lockdowns



Deluxe Food 1.1MW

SMEA 1.5MW

Muda Paper Mills 3.5MW

Muda Pasifik 1.2MW

1 Shamelin 1.2MW

Completed 7MW despite of the Malaysia's
Covid Strict Regulations & Multiple Lockdowns
In the Pipeline to Complete Q2

Muda Paper	-3MW
Evergreen	-7MW
EITA	-500kW
KL 118	-130kW
FAMA	-740kW

PAST REFERENCES

OF COMPLETED PROJECT PHOTOS



Q-Cells Test Site , Cyberjaya, Malaysia

Installation Type: Ground Mounted
Capacity: 15 KWp
Completion: Q3 2011



Residential , Sungai Long, Malaysia

Installation Type: Residential Roof Top
Capacity: 60KWp
Completion: Q4 2011



SP Setia Project , Setia Alam, Malaysia

Installation Type: Residential Roof Top
Capacity: 115 KWp
Completion: Q3 2012



Solar Farm, Melaka, Malaysia

Installation Type: Ground Mounted
Capacity: 5 MW
Completion: Q2 2013



BIPV Integrated Solar Roof, Ipoh, Malaysia

Installation Type: BIPV Solar Roof
Capacity: 1.5 MW
Completion: Q4 2013



Industrial Roof, Penang, Malaysia

Installation Type: Retrofitted Roof
Capacity: 360 KWp
Completion: Q4 2013



Antah Healthcare

Installation Type: Industrial Roof Top
Capacity: 310KWp
Completion: Q4 2016



Flour Factory , Penang

Installation Type: Retrofitted Roof Penang
Capacity: 850kW
Completion: Q4 2017



One Solar System Sdn Bhd

Installation Type: BIPV Solar Roof
Capacity: 425kW
Completion: Q4 2017



Hayakawa Wuxi, China

Installation Type: Retrofitted Roof
Capacity: 190kW + 110kW
Completion: Q4 2017



Kolej Tuanku Ja'afar

Installation Type: Commercial Roof Top
Capacity: 960.63KWp
Completion: Q3 2017



Aliran Tokoh Sdn Bhd

Installation Type: BIPV Solar Roof
Capacity: 425kW
Completion: Q3 2017



University of Nottingham

Installation Type: BIPV Solar Roof
Capacity: 62kW
Completion: Q3 2017



Industrial Roof, Nilai Malaysia

Installation Type: Retrofitted Roof
Capacity: 20 KWp
Completion: 2018



Industrial Roof, Johore Malaysia

Installation Type: Retrofitted Roof
Capacity: 5 MWp
Completion: Q4 2019



Wisma Rehda

Installation Type: Industrial Roof Top
Capacity: 50.16kWp
Completion: Q4 2019